



**ILP PLUS**

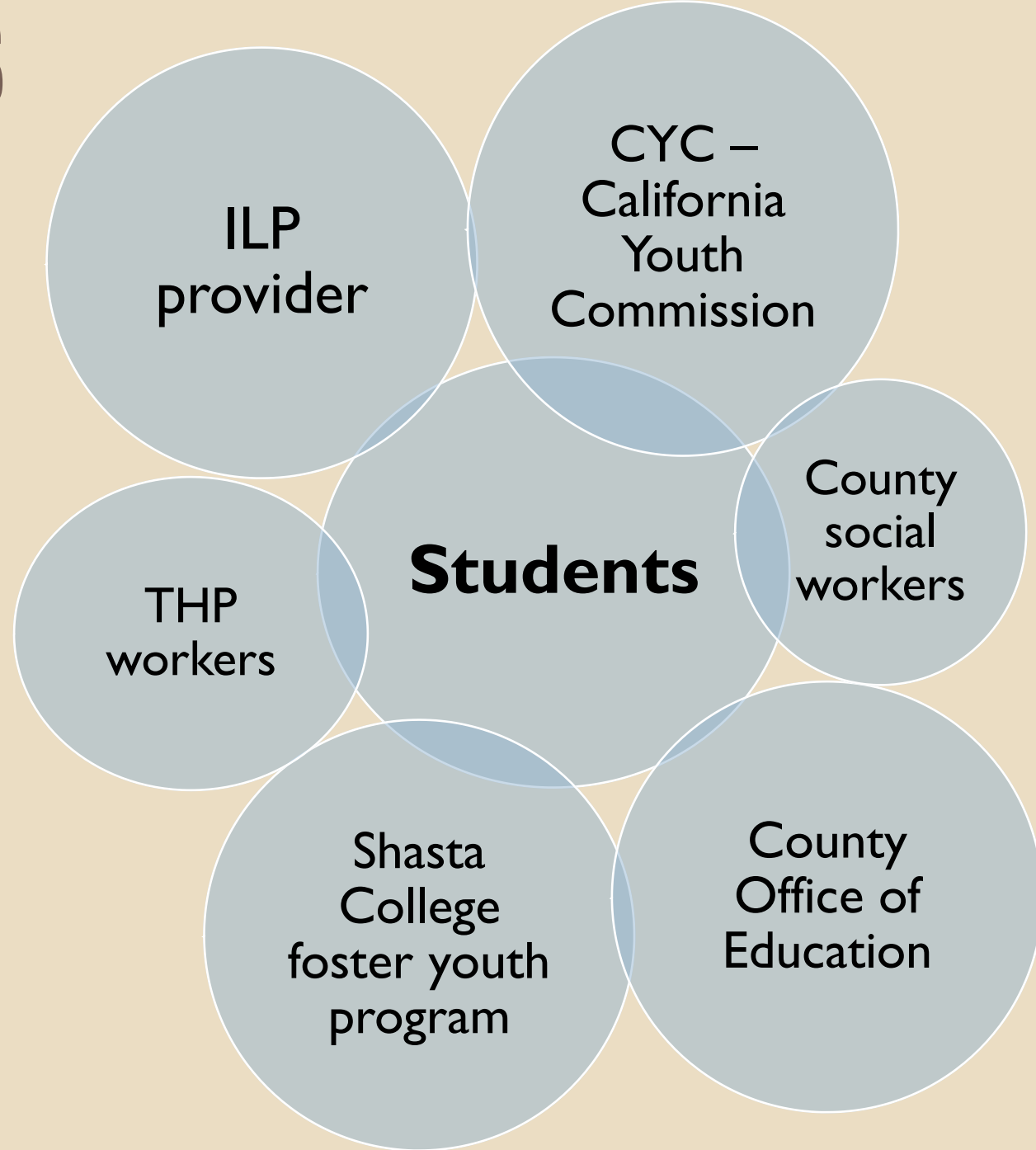
**EXTENDING ILP TO AGE 26**

**SHASTA COLLEGE SCI\*FI PROGRAM  
YOUTH AND FAMILY ILP**



**“College is about having to be independent and leave the nest, but foster kids didn’t even have a nest to fly out of,” Jones points out. “We weren’t equipped with the tools we needed when we got out of that foster home.”**

# PARTNERS



# PARADIGM / INTANGIBLES



Intersectionality – Race/Ethnic background; LGBTQ;  
Developmental stage – Emerging Adulthood (Jeffrey Arnett)

Nature of living skills acquisition – organic, natural. Not compatible with didactic, classroom environment.

Continuity – same staff/services over time. Allows someone to be in student's life over longer period of time.

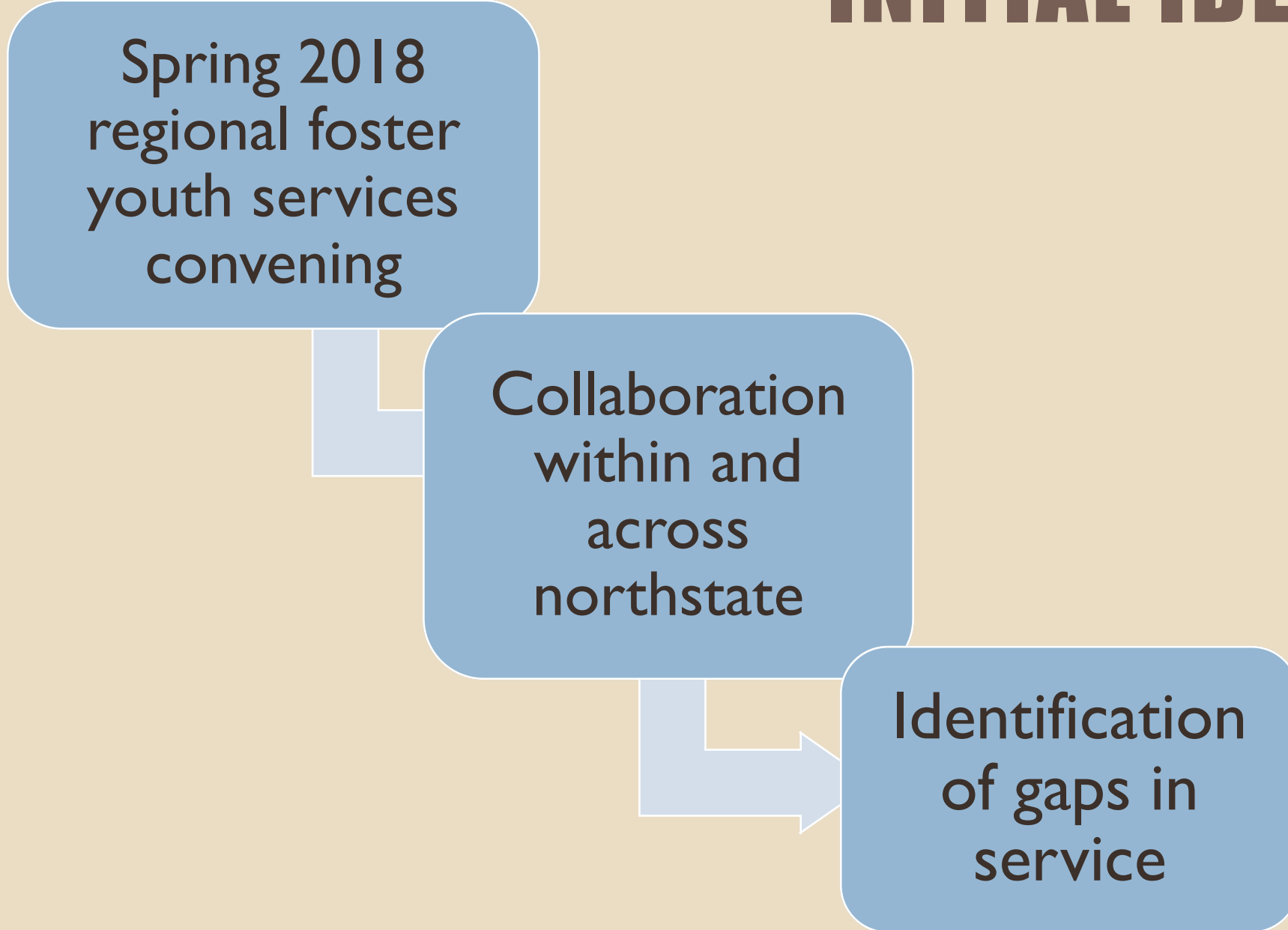
Voluntary – not required. Allows youth to have agency, self-determination to engage at the level they want.

# INITIAL IDEA

Spring 2018  
regional foster  
youth services  
convening

Collaboration  
within and  
across  
northstate

Identification  
of gaps in  
service









# Shasta College

## WHAT IS SCI\*FI

College

Inspiring and

Fostering

Independence

**Launched in 2012**

**Staff**

**Counselor**

**Bob De Paul**

**Talia Shirer (PT)**

**Casemanagers**

**Leticia Castillo-  
Ramos**

**Steve Williams (PT)**

**Location**

**Main Campus**

**Tehama campus**







# **Funding**

**YESS-ILP**

**Walter S. Johnson**

**CAFYES/NextUP**

**Equity**

**EOPS**

# WHO ARE ILP+ YOUTH?

**Age 21-26**

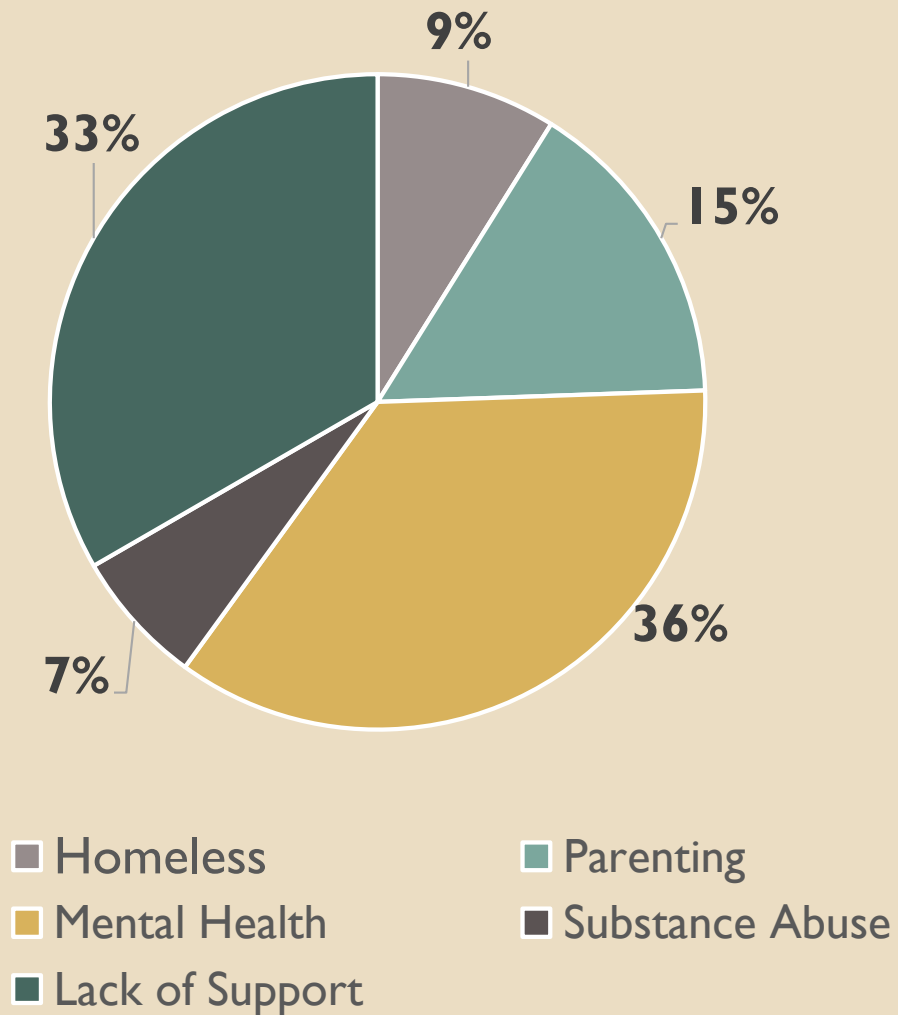
**Attending or wanting to attend college**

**Enrolled in SCI\*FI**

**Former ILP participants**

# Why are extended services needed?

Age 21-26 Demographics



- Youth entering adulthood have new barriers
- Many youth fall through the cracks at age 21
- Many youth attended college between ages 18-21 but were not successful.
- Focus on “Re-emerging” students
- Continuation of a single provider in the lives of foster youth has shown greater probability of success

# WHAT WE WANTED TO PROVIDE

---

Monthly visits

---

One on one based services

---

Weekly drop-in hours at local college

---

Updated TILPS

---

Six month goal plans

---

Access to higher education

---

Collaboration with our local SCI\*FI program/community college

---

Enrollment until graduation or age 26

# WHAT WE WANTED TO PROVIDE

---

Housing/HUD referrals

---

Positive social connections

---

Job search/employment education

---

Obtaining important documents

---

Credit health

---

Parenting support

---

Local drop-in support center off campus

---

Monthly workshops/incentives

---

FAFSA/scholarship applications



Worked closely with our local college and their SCI\*FI Program

Obtained demographics from participating youth to see what needs were being unmet

Hired a case manager to oversee only ILP+ youth

Created updated forms to reflect the needs of youth age 21-26

**GETTING  
STARTED...**



Youth were receptive

Enrollment increased from 5 youth  
to 40 youth in one semester

Relationships with local agencies  
were strengthened

Positive feedback from our local  
college as well as youth

Youth considering Masters Degrees  
and applying to UC

Reduction in homelessness of  
college age foster youth

WHAT  
WE  
SAW



# FUTURE GOALS OF ILP+

# STUDENT DEMOGRAPHICS

Total #  
students 43

- Never enrolled 5
- Graduated 3
- Enrolled F19 26 (65%)
- Enrolled both semesters 15 (35%)

Age

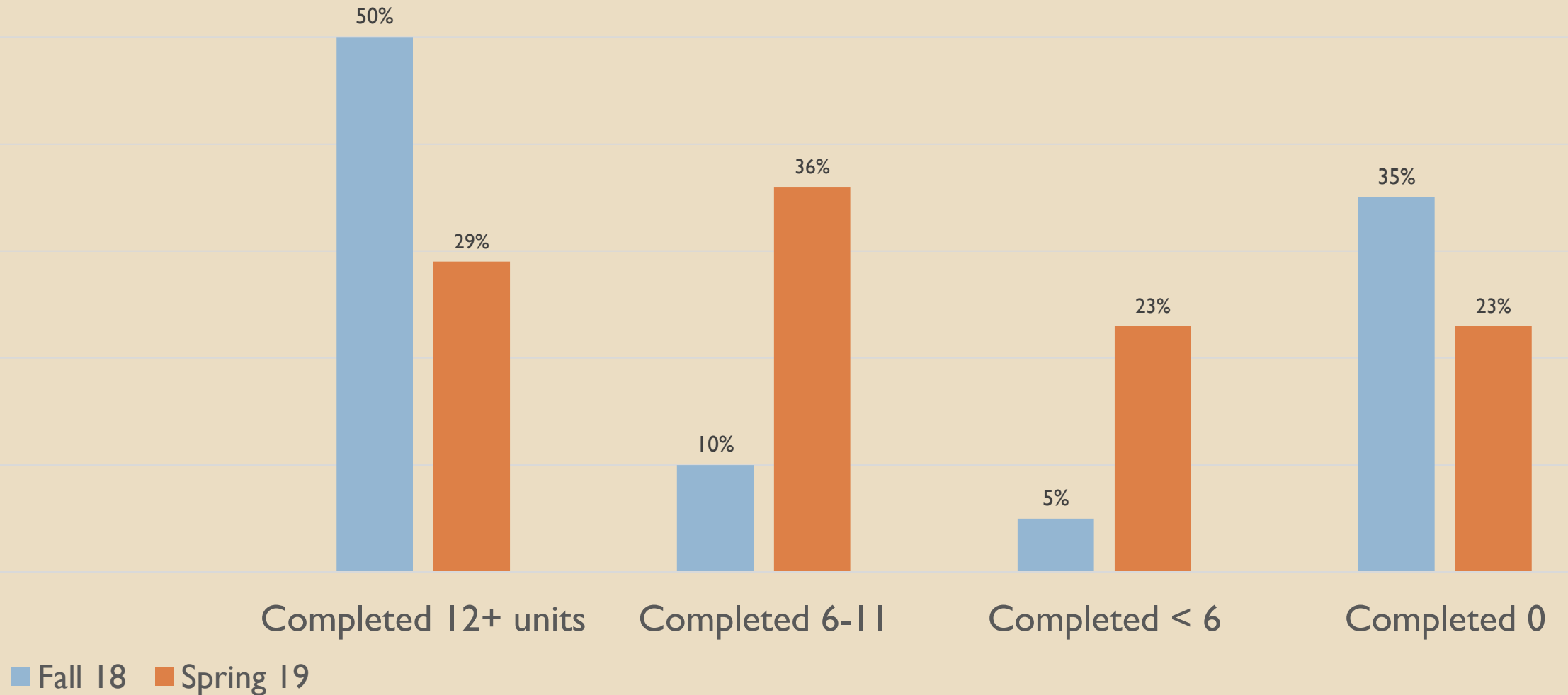
- 24-26 y.o. 46%
- 22-23 y.o. 42%
- 21 & under 12%

Ethnic background  
ILP+ / SC population

- White 53% / 65%
- AN/more than one 19% / 2.4%
- BL/more than one 12% / 3.2%
- HL/more than one 16% / 18%

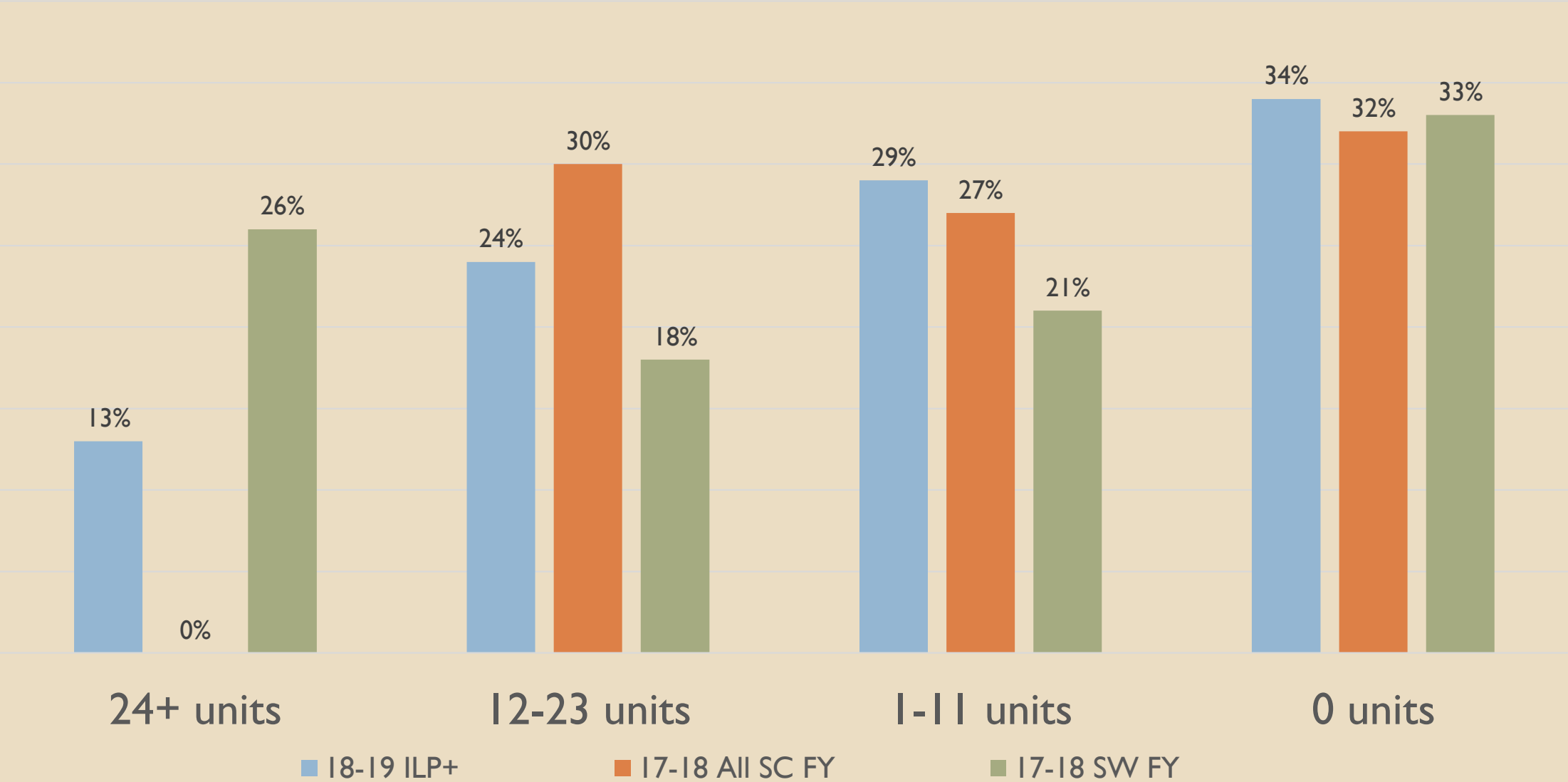
# FALL 18 / SPRING 19 OUTCOMES

Units completed - semester





# Units completed Academic Year



**ILP + (18-19) / 17-18 SC FY / 17-18 STATEWIDE FY**

# OVERALL METRICS

## Units earned

- 30+ 39% (maximum 92 units. Student earned 2 Assoc. degrees and 1 certificate)
- 15-29 21%
- 0.5-14 39%

## Cum GPA

- 55% have cum GPA above 2.0

## DSPS

- 30% are enrolled in DSPS services

# BUDGET

	1st Year	2nd Year
Caseworker Salary	23,612	37,440
Caseworker Benefits	10,503	22,680
Communications	990	1,080
Travel	4,700	4,000
Program Expenses	8,000	5,000
Support Staff Salary	2,500	9,912
Support Staff Benefits	230	2,730
Indirect Costs	1,920	1,920
	\$ 52,455	\$ 84,762

# CONTACTS

- **Sandra Hamilton Slane**

[sslane@Shastacollege.edu](mailto:sslane@Shastacollege.edu)

**(530) 242-7799**

- **Valerie Hartley**

[vhartley@youthandfamily.info](mailto:vhartley@youthandfamily.info)

**(530) 365-9197**



**MARIE**

**LIZ**

**KALYN**

**TREVOR**